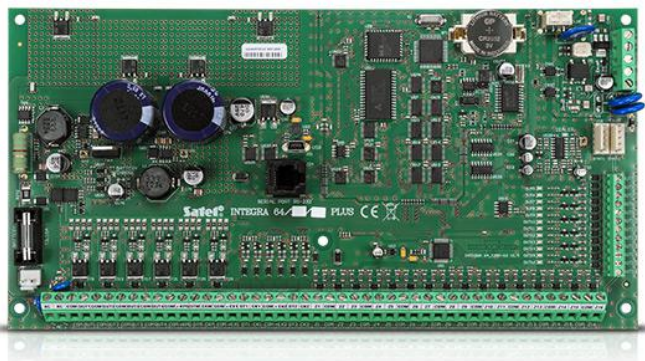


INTEGRA 64 Plus

EN50131 GRADE 3 COMPLIANT ALARM CONTROL PANEL MAIN BOARD, WITH 16 UP TO 64 ZONES AND OUTPUTS

Due to their full compliance with the requirements of EN50131 Grade 3, the **INTEGRA Plus** control units are perfectly fit for implementation of advanced security systems at locations with particularly high risk of burglary, such as banks, jewellery stores or public utility facilities. The control units are characterised by extended functionality, due to which they can be used for implementation of access control systems or even intelligent building solutions.

- full compliance with EN50131 series of standards for Grade 3 equipment
- built-in advanced 2 A+1.5 A power supply with extended autodiagnosics
- up to 64 zones with programmable EOL value and support for 3 EOL configuration
- USB port for programming via PC
- up to 32 partitions, 8 objects
- up to 64 fully programmable outputs
- dedicated buses for communication with keypads and expansion modules
- system operation via touchscreen keypads, LCD keypads, partition keypads, remote control keyfobs or proximity cards
- remote system operation with PC, smartphone or voice-guided telephone menu
- 64 independent timers for automatic control
- access control and home automation features
- non-volatile event log with 5631 entries, with on-line printing support
- support for 192+8+1 user codes
- firmware upgrades via PC
- option of not reporting possible problems with connecting to the SATEL server as a failure



TECHNICAL DATA

| | |
|--|-------------------|
| Installer-defined text messaged | 64 |
| Extender circuits | up to 64 |
| Environmental class according to EN50130-5 | II |
| Voice messages | 16 |
| Communication buses | 1+2 |
| Maximum number of programmable inputs | 64 |
| Maximum number of programmable outputs | 64 |
| Maximum humidity | 93±3% |
| Maximum current consumption from the battery | 200 mA |
| Maximum current consumption from the 230V network | 400 mA |
| Maximum battery charging current | 1500 mA |
| Keypads | up to 8 |
| Weight | 320 g |
| Battery cut-off voltage (±10%) | 10,5 V |
| Power supply output voltage | 10,5...14 V DC |
| Supply voltage (±15%) | 20 V AC, 50-60 Hz |
| Battery failure voltage threshold (±10%) | 11 V |
| Telephone numbers for notification (voice/PAGER + SMS) | 16+16 |
| Carrying capacity of the +EX1 and +EX2 outputs (±10%) | 3000 mA |
| Low current programmable outputs rating | 50 mA |
| High current programmable outputs rating | 3000 mA |
| Carrying capacity of the +KPD output (±10%) | 3000 mA |
| Event log | 5631 |
| Objects | 8 |
| Current consumption from the 230V network in standby | 135 mA |
| Current consumption from battery - standby | 130 mA |
| Security grade according to EN 50131 | Grade 3 |
| Partitions | 32 |
| Timers | 64 |
| Users + Administrators | 192 + 8 |
| Programmable wired inputs | 16 |
| Power supply current efficiency (supplying devices + charging batteries) | 2000 + 1500 mA |
| Programmable wired outputs | 16 |
| Supplying outputs | 3 |
| Board dimensions | 264 x 134 mm |
| Operating temperature range | -10...+55 °C |
| Recommended transformer type | 75 VA |